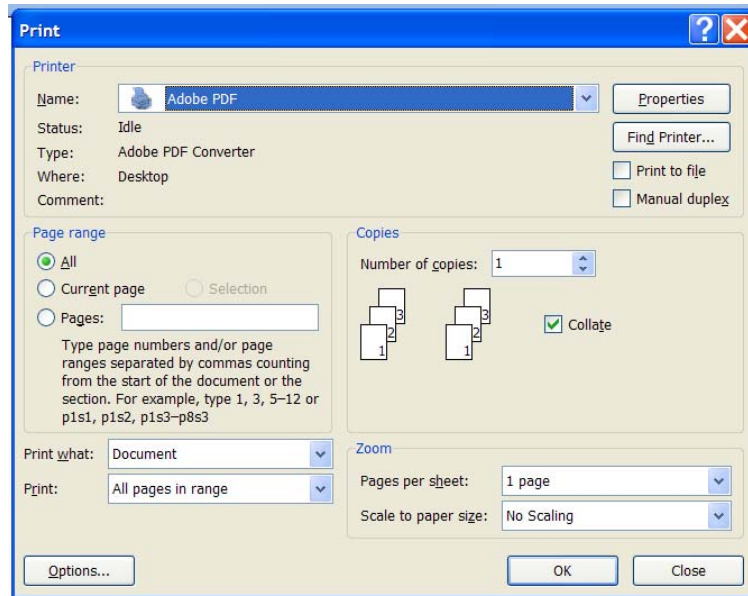


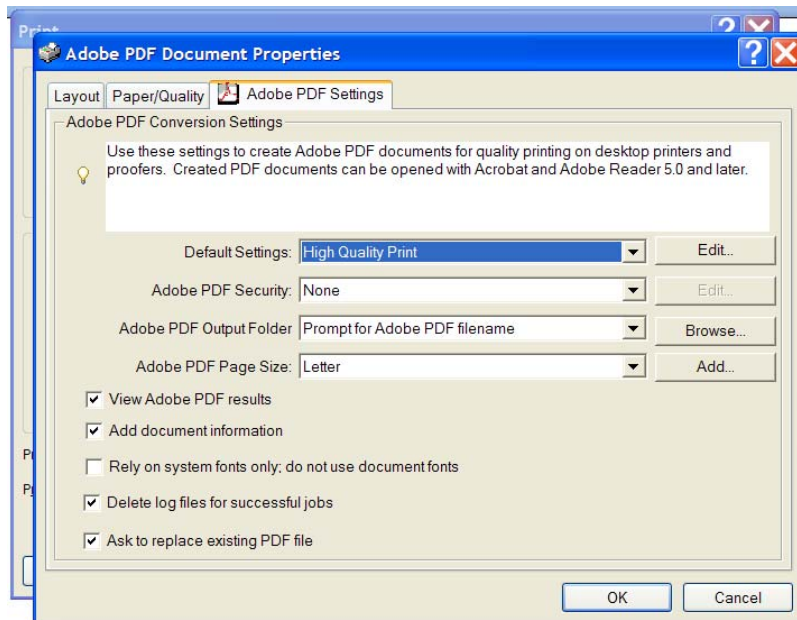
Configure PDF Settings

The PDF settings in *Adobe Acrobat* are configured independently in *PDF Maker*, *Adobe PDF printer*, or *Adobe Distiller*. You configure the PDF settings in the module that you use to create the PDF file. Here we illustrate the steps for *Adobe PDF printer*.

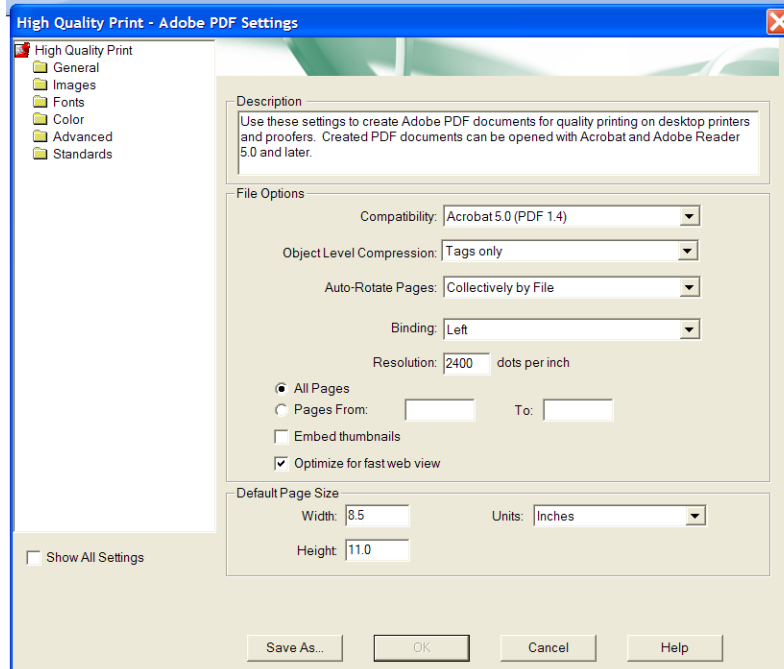
1. Open the Print Dialog Box from your application (for example, *MS Word*). Select *Adobe PDF* from the printer drop down list and click the *Properties* button.



2. Select *High Quality Print* from the *Default Settings* drop down list and click the *Edit* button to the left of the drop down list.



3. Select the *Fonts* folder from the list of folders to the left.



4. The check boxes next to *Embed all fonts* and *Subset embedded fonts when percent of characters used is less than 100 %* should be checked.

